

Confidential, all rights reserved. Observe copyright notice ISO 16016.

Language code to ISO 639-1: en

ICS

Descriptors: Packing

Table of Contents

	Page
1	General conditions2
1.1	Special notes.....2
1.2	Corrosion protection.....2
1.3	External packaging inspections (for direct deliveries).....2
1.4	Guarantee2
2	Packaging materials.....2
3	Goods Classes (GK)2
4	Packaging matrix.....3
4.1	General3
5	Packaging categories (VK).....3
5.1	Packaging category VK 3a: Wooden supports for rolls4
5.2	Packaging category VK 8a: Seaworthy case for rolls (with lining, from 15 tonnes)4
5.3	Packaging category VK 8b: Seaworthy case (with lining), from 15 to 30 tonnes for rolls7
5.4	Packaging category VK 8c: Seaworthy case (with lining), from 30 tonnes upwards for rolls9
6	Marking and signing instructions12

Earlier editions: 03-08

Revision: Chapter 5.4 newly included, editorially revised.

Page 1 / 13

	Name	Date	Signature
Prepared by	Kliemas-VPH-p2aml	2009-11-30	sgd. (Kliemas)
Checked by	Kämmerer-VPH-p6qhn	2009-12-03	sgd. (Kämmerer)
Approved by	Jung-VPH-p6qhn	2009-12-07	sgd. (Jung)

1 General conditions

1.1 Special notes

1. Fundamentally, the regulations set forth in Part 1 of VN 1577 apply to rolls and cylinders provided that they are valid for rolls and cylinders.
2. If the final customer gives other instructions for packaging, it must be pointed out to him that Voith Paper's packaging instructions are different.

1.2 Corrosion protection

Because of the long transport and storage time, all rolls must be protected against corrosion. Corrosion protection is to be applied in accordance with VN 1576-2. The processing instructions for the relevant anti-corrosion agent must be strictly followed.

1.3 External packaging inspections (for direct deliveries)

1. Voith shall have the right to inspect the packaging at any time at the contractor's premises.
2. If repeated inspections are necessary for which the contractor is culpable, the contractor shall bear the resultant costs (e.g. labor, traveling expenses, material costs).
3. Packaging inspections shall not relieve the contractor of his contractual obligations.

1.4 Guarantee

The contractor shall guarantee contractual performance of the packaging according to the state of the art, in particular the best quality and suitability of the packaging material, as well as suitability of the packaging, taking into account the goods to be packed and the actual stresses, for the guarantee periods set forth in the relevant contracts.

2 Packaging materials

2.1.1 Wood

All wood used (cases, pallets, dunnage, etc.) must be treated in accordance with the IPPC Standard and marked accordingly.

2.1.2 Foils and films

1. Aluminum composite foil designed as sealing layer foil.
2. PE film
3. Wrapping paper (paperboard)
4. Flexible lamella packaging (e.g. Lamiflex, Lamipack)

2.1.3 Padding and filler materials

Padding paper, air bags, air cushion foil, foam foils and foam mats are to be used as filler material.

ATTENTION: Styrofoam chips must never be used.

The use of hygroscopic filler and padding materials (e.g. wood wool, hay, straw, waste paper, etc.) to fill out empty spaces and/or for padding is not allowed.

3 Goods Classes (GK)

As the materials to be packed are of different physical and chemical sensitivities, they are grouped in the following Goods Classes, depending on their properties.

If the contractor cannot clearly determine the Goods Class, Voith must be consulted.

Goods Classes GK 1-9 are established in VN1577-1.

Rolls (coated and uncoated) always correspond to GK6.

Note: For rolls coated with rubber, polyurethane and ceramic, use exclusively packaging category VK8a or VK8b.

4 Packaging matrix

4.1 General

Should several carriers be deployed for shipment of the goods, the packaging must be in accordance with the highest packaging category/transport class.

Goods Class (GK)	Modes of transport					Storage to VN 1576-2
	Truck	Rail	Ocean	Container ¹⁾	Air	
Packaging category (VK)						
GK 6	VK 8a, VK 8b, VK 8c	VK 8a, VK 8b, VK 8c	VK 8a, VK 8b, VK 8c	VK 8a, VK 8b, VK 8c	VK 8a, VK 8b, VK 8c	A coated rolls
GK 6	VK 3a, VK 8a, VK 8b, VK 8c	VK 8a, VK 8b, VK 8c	VK 8a, VK 8b, VK 8c	VK 8a, VK 8b, VK 8c	VK 8a, VK 8b, VK 8c	B uncoated rolls

¹⁾ Like Transport Class 3 (sea freight) but transported in the shipping company's container.

A shipping company's container is not considered to be packaging, but a means of conveyance or transport container.

5 Packaging categories (VK)

The packaging categories are defined in VN 1577-1.

Packaging categories applicable to rolls

Packaging category description	Page
Packaging category VK 3a: Wooden supports for rolls	4
Packaging category VK 8a: Seaworthy case (with lining, from 15 tonnes upwards) for rolls	4
Packaging category VK 8b: Seaworthy case (with lining, from 15 to 30 tonnes) for rolls	7
Packaging category VK 8c: Seaworthy case (with lining, from 30 tonnes upwards) for rolls	9

5.1 Packaging category VK 3a: Wooden supports for rolls

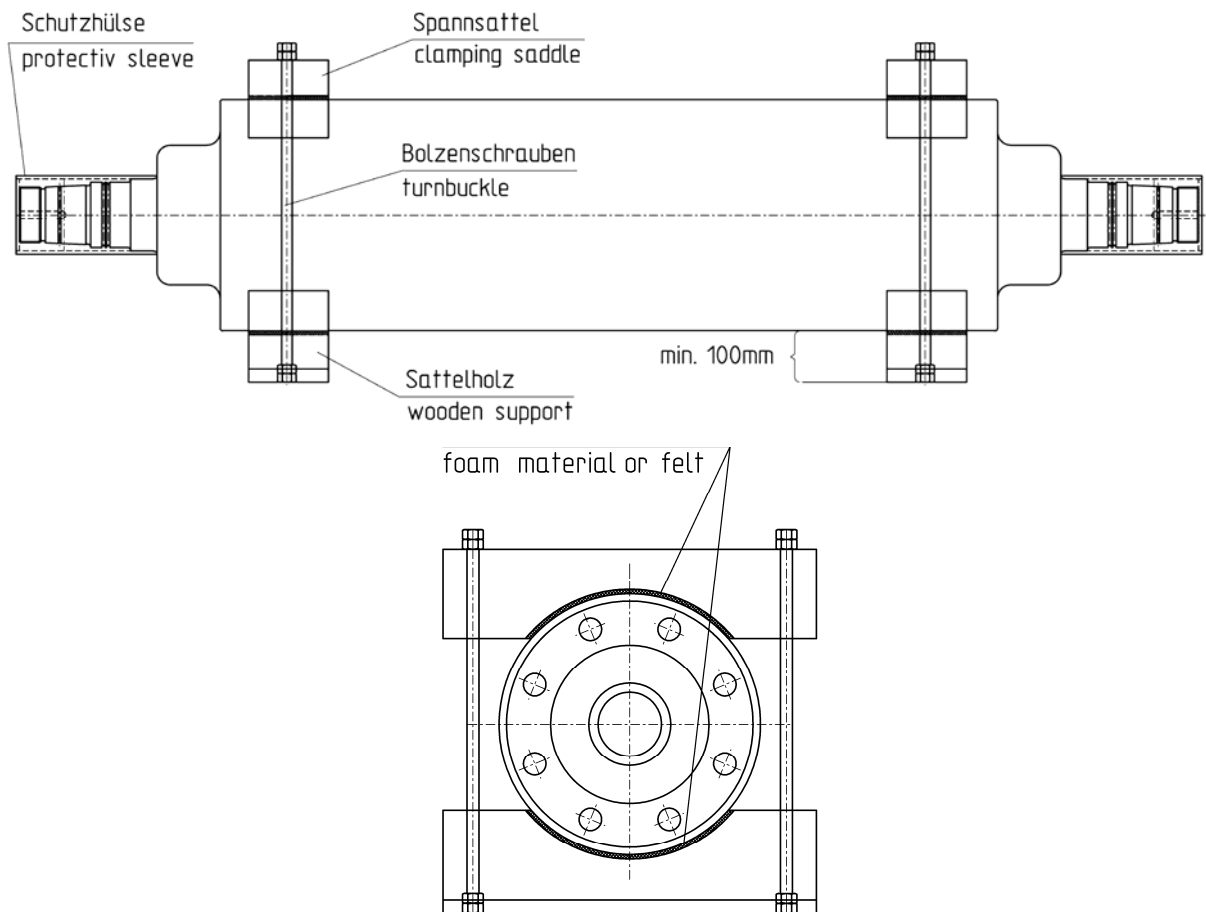
Application

For door-to-door transport (truck transport), uncoated rolls may be packed on wooden supports (trestles).

The wooden supports must be designed so that contact with the rolls (if several rolls are transported by truck) is avoided.

Avoid slippage of the wooden supports on the truck by adjusting the weight distribution.

Fig. 1: Design of the supports



5.2 Packaging category VK 8a: Seaworthy case for rolls (with lining, from 15 tonnes)

Always design the case in accordance with the total gross weight.

5.2.1 Case bottom

Dimension longitudinal runners according to the roll weight (at least 80 mm thick), bottom boarding at least 24 mm thick. For cases > 5 t and /or width > 2000 mm: Front-end beam bolted to longitudinal runner (through bolt with washer + nut).

Transverse runners up to 5 t, 100 x 100 mm thick, from 5 t, 100 x 120 mm thick, must be bolted to the longitudinal and/or intermediate runners or securely nailed several times.

Securing block for transverse runner: Width like longitudinal runner, height 100 mm, length 400 - 1000 mm, fork-lift truck width must remain free.

From 2 t: Securing block or lock for longitudinal runner: Height like longitudinal runner, width 80 mm, length results from case width.

Special note for heavy-lift packaging ≥ 5 t: For heavy-lift packaging, the cases must be provided with special heavy-lift hardware and/or case angles.

5.2.2 Side walls, face walls and covers

These must be designed to meet the requirements.

For cases > 2 t and / or length > 3000 mm truss-type stiffening is required.

5.2.3 Stack pressure

Strap frames, diagonals and case cover pressure blocks must be designed for a stack pressure of at least 1 t/m². The case cover pressure blocks, including case cover pressure block supports, must be installed at distances of 600 – 700 mm and nailed to the side walls.

5.2.4 Lining

Line the inside walls of the case and the cover with waterproof specialty paper or equivalent materials with sufficient overlap. The lining must not penetrate or be damaged.

5.2.5 Contact surface

To prevent the roll shell from touching the case, provide contact surfaces in the case at the roll ends. For rolls with mounted bearings, take special care that the roll is not fixed on the supports in the case.

Coated rolls must only be placed at their journal or hub. Depositing on the roll face is forbidden. In special cases (O P&J, shortened), use special devices.

Select the design of the support in accordance with the load and the available contact surface (at least 50 mm). Where required, use hardwood. Furthermore, lay out the contact surface with foam material or felt.

After the roll is placed in the case, the preservation of the roll must be checked for damage and repaired, if necessary.

The distance of the rolls from each other and from the side walls must be at least 100 mm.

The distance of the rolls from the bottom and from the cover must be at least 100 mm.

5.2.6 Marking for handling

Roll cases must be provided with the following markings for handling:

- Protect from moisture
- Center of gravity
- Attach here
- Top
- Allowed temperature range (values are explicitly indicated)
- Lifting by forklift is not allowed
- Symbol for storage class

For the design of the symbols, see section relating to Marking and Signing.

Fig. 1: Case design up to 3 t

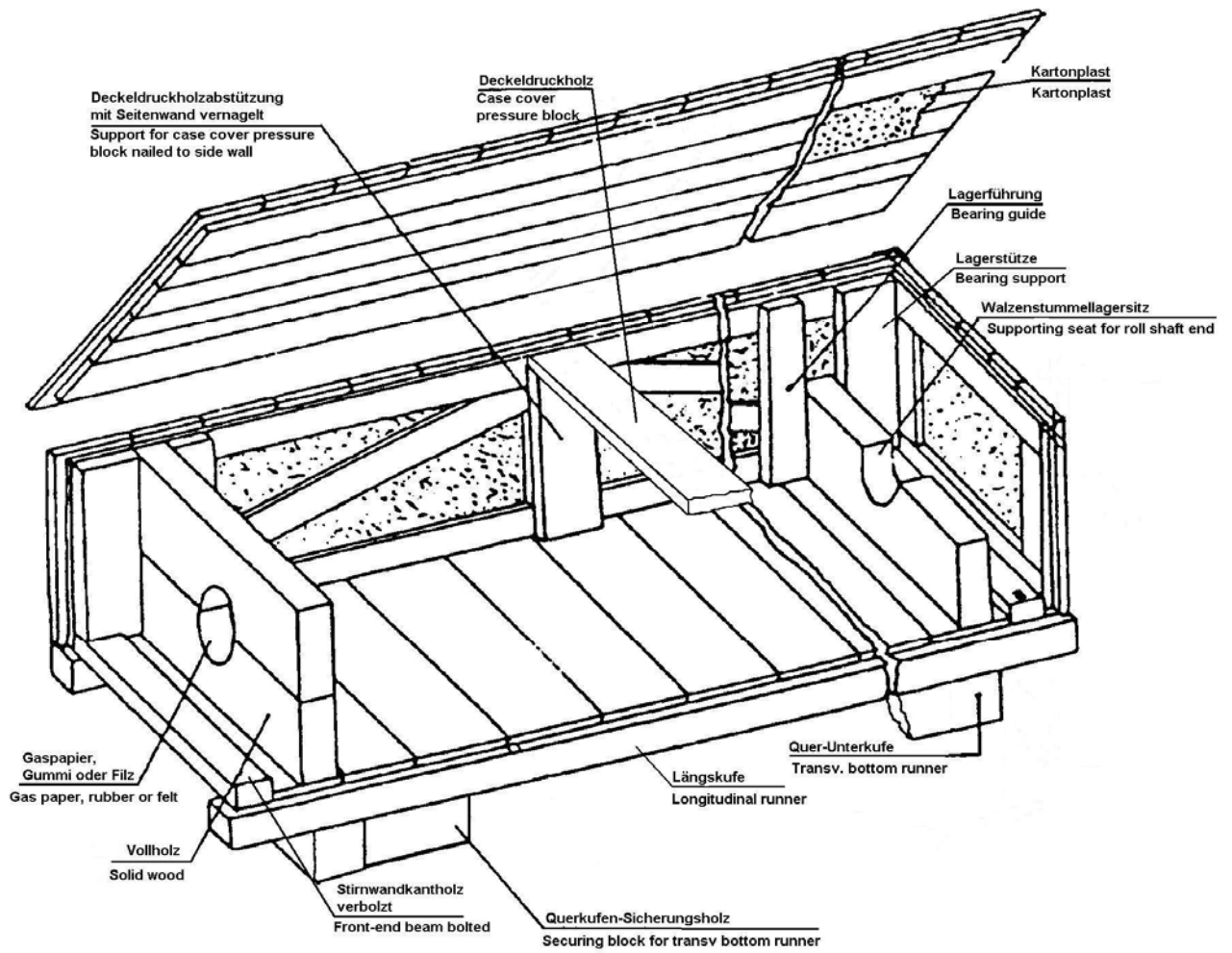
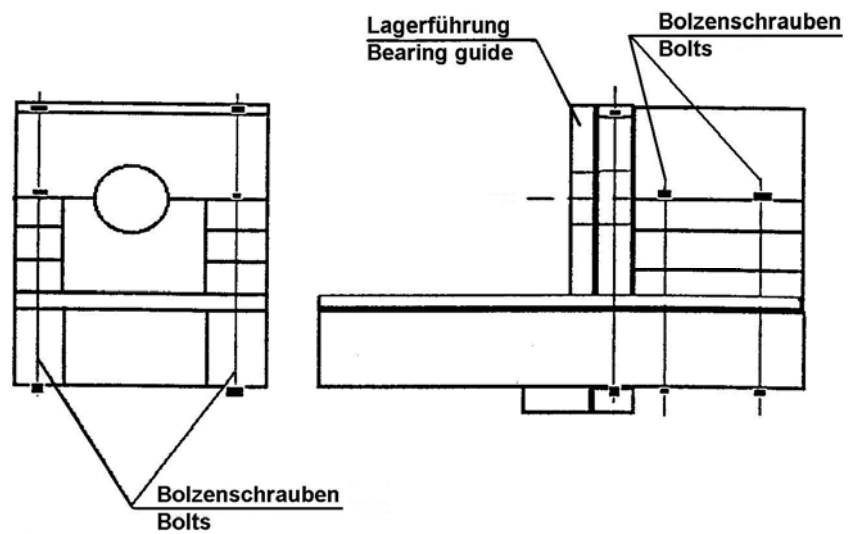


Fig. 3: Case design (roll bearings) from 3 t



5.3 Packaging category VK 8b: Seaworthy case (with lining), from 15 to 30 tonnes for rolls

Always design the case in accordance with the total gross weight.

5.3.1 Case bottom

Dimension longitudinal runners according to the roll weight (at least 120 mm thick), bottom boarding at least 24 mm thick.

Front-end beam bolted to longitudinal runner (through bolt with washer + nut).

Transverse bottom runners up to 100 x 120 mm thickness must be bolted to the longitudinal and intermediate runners or be nailed multiple times.

Securing block for transverse runner: Width like longitudinal runner, height 100 mm, length 400 - 1000 mm, fork-lift truck width must remain free.

Securing block or lock for longitudinal runner: Height like longitudinal runner, width 80 mm, length results from case width.

The cases must be provided with special heavy-lift hardware and/or case angles.

5.3.2 Side walls, face walls and covers

These must be designed to meet the requirements. Truss-type stiffening is required.

Side walls: Strap frames and diagonals on the inside. Between the strap frame and the boarding line with waterproof specialty paper or equivalent materials with sufficient overlap. The lining must not penetrate or be damaged.

Face walls: Strap frame of the face wall at least 50 x 50 mm thick. The strap frame must be stiffened on wide cases at a distance of max. 1200 mm with vertical square timbers.

When there is vertical boarding, fit straps horizontally in addition at a distance of max. 1200 mm. Care must be taken that the vertical straps are always full-length.

Cover: Longitudinal and transverse boarding, in between hollow chamber plates (Kartonplast) if Kartonplast consists of several parts, at least 150 mm overlapping and sealed with adhesive tape. The cover must rest on the strap frames of the face walls and on the case cover pressure blocks.

5.3.3 Stack pressure

Strap frames, diagonals and case cover pressure blocks must be designed for a stack pressure of at least 1 t/m². The case cover pressure blocks, including case cover pressure block supports, must be installed at distances of 600 – 700 mm and nailed to the side walls.

5.3.4 Lining

Line the inside walls of the case and the cover with waterproof specialty paper or equivalent materials with sufficient overlap. The lining must not penetrate or be damaged.

5.3.5 Contact surface

To prevent the roll shell from touching the case, provide contact surfaces in the case at the roll ends. For rolls with mounted bearings, take special care that the roll is not fixed on the supports in the case.

Coated rolls must only be placed at their journal or hub. Depositing on the roll face is forbidden. In special cases use special devices.

Select the design of the support in accordance with the load and the available contact surface (at least 50 mm). Where required, use hardwood. Furthermore, lay out the contact surface with foam material or felt.

After the roll is placed in the case, the preservation of the roll must be checked for damage and repaired, if necessary.

The distance of the rolls from each other and from the side walls must be at least 100 mm.

The distance of the rolls from the bottom and from the cover must be at least 100 mm.

5.3.6 Marking for handling

Roll cases must be provided with the following markings for handling:

- Protect from moisture
- Attach here
- Allowed temperature range (values are explicitly indicated)
- Symbol for storage class
- Center of gravity
- Top
- Lifting by forklift is not allowed
- Drive side

For the design of the symbols, see section relating to Marking and Signing.

Fig. 4: Case execution, reinforced (over 15 t)

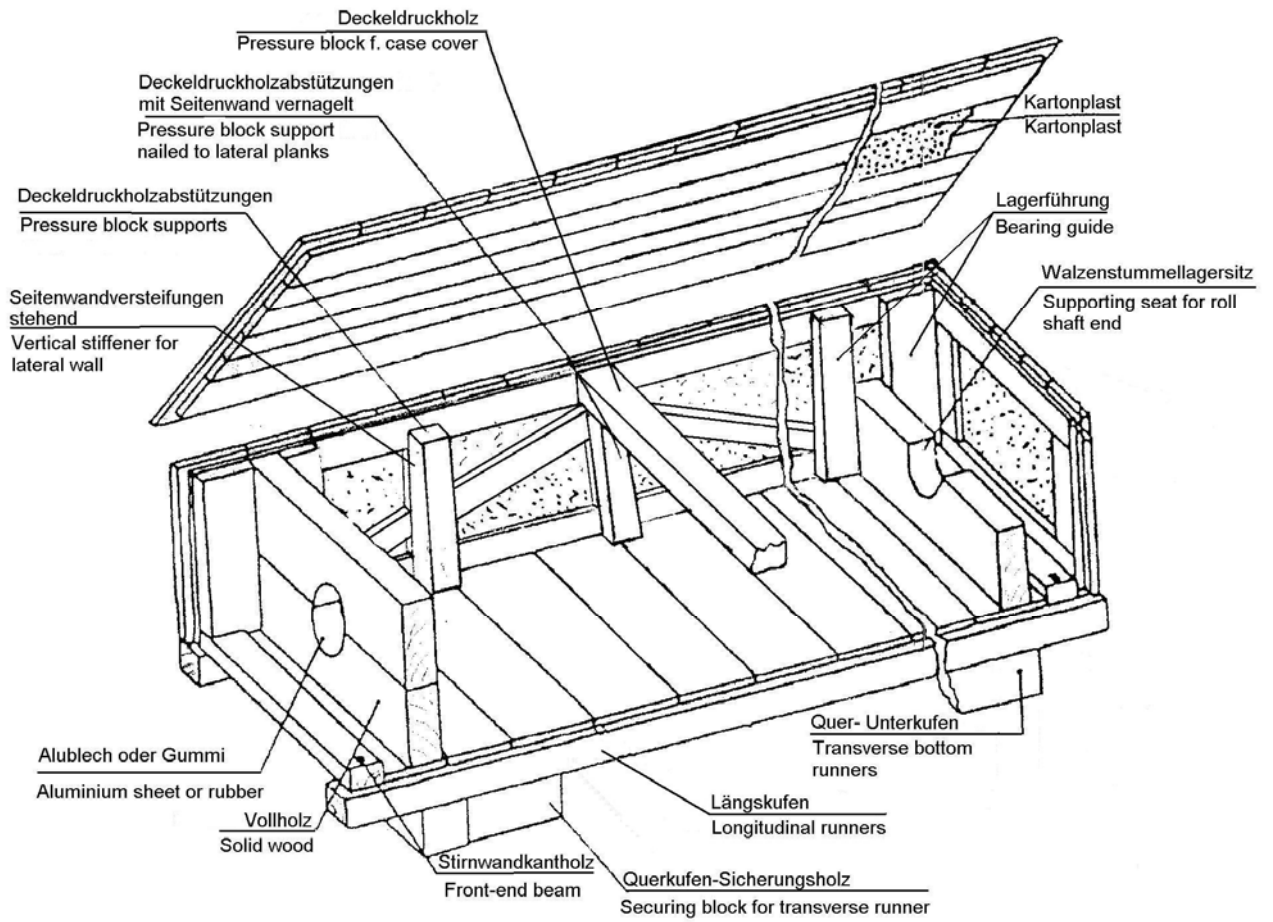
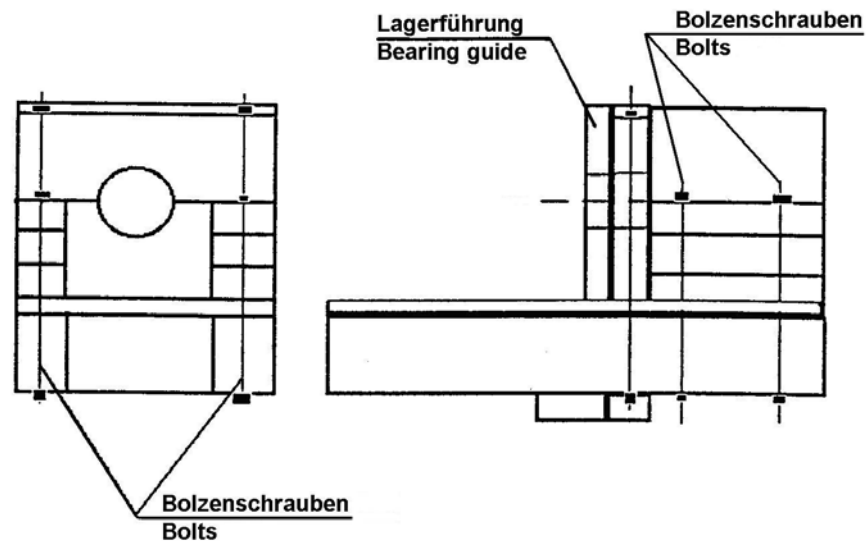


Fig. 5: Case execution (roll bearings)



5.4 Packaging category VK 8c: Seaworthy case (with lining), from 30 tonnes upwards for rolls

Always design the case in accordance with the total gross weight.

5.4.1 Case bottom

Dimension longitudinal runners according to the roll weight (at least 150x240 mm thick from composite lumber), bottom boarding at least 24 mm thick.

Front-end beam bolted to longitudinal runner (through bolt with washer + nut).

Transverse bottom runners (Fig. 6) 200x200 thick, must be bolted to the longitudinal and intermediate runners or be bolted multiple times. At the suspension points, 2 transverse bottom runners each (Fig. 6) are to be mounted beside each other.

Securing block for transverse runners (Fig. 7): Width like longitudinal runner, height 200 mm, length 400 - 1000 mm, fork-lift truck width must remain free.

On delivery, a lengthwise formwork (Fig. 8) must be fitted to the transverse bottom runners or to the wooden safety device.

Securing block or lock for longitudinal runner: Height like longitudinal runner, width at least 150 mm, the length results from the case width. The cases must be provided with special heavy-lift hardware and/or case angles. (Use case angles over 30 tonnes)

5.4.2 Side walls, face walls and covers

These must be designed to meet the requirements. Truss-type stiffening is required.

Side walls: Strap frames and diagonals on the inside. Between the strap frame and the boarding line with waterproof specialty paper or equivalent materials with sufficient overlap. The lining must not penetrate or be damaged.

Face walls: Strap frame of the face wall at least 50 x 80 mm thick. The strap frame must be stiffened on wide cases at a distance of max. 1200 mm with vertical square timbers.

When there is vertical boarding, fit straps horizontally in addition at a distance of max. 1200 mm with at least 100 x 120mm. Care must be taken that the vertical straps are always full-length.

Cover: Longitudinal and transverse boarding, in between hollow chamber plates (Kartonplast) if Kartonplast consists of several parts, at least 150 mm overlapping and sealed with adhesive tape. The cover must rest on the strap frames of the face walls and on the case cover pressure blocks.

5.4.3 Stack pressure

Strap frames, diagonals and case cover pressure blocks must be designed for a stack pressure of at least 1 t/m².

The case cover pressure blocks, including case cover pressure block supports, must be installed at distances of 600 – 700 mm and nailed to the side walls.

5.4.4 Lining

Line the inside walls of the case and the cover with waterproof specialty paper or equivalent materials with sufficient overlap. The lining must not penetrate or be damaged.

5.4.5 Contact surface

To prevent the roll shell from touching the case, provide contact surfaces consisting of hardwood (e.g. beech) Fig. 9: in the case at the roll ends. For rolls with mounted bearings, take special care that the roll is not fixed on the supports in the case.

Coated rolls must only be placed only at their journal or hub. Depositing on the roll face is forbidden. In special cases use special devices.

The support is to be lined with foam or felt according to the load and the contact surface available.

After the roll is placed in the case, the preservation of the roll must be checked for damage and repaired, if necessary.

The distance of the rolls from the side walls or to the vertical lugs must be at least 100 mm.

The distance of the rolls from the bottom and from the cover and to the horizontal lugs must be at least 200 mm.

5.4.6 Marking for handling

Roll cases must be provided with the following markings for handling:

- Protect from moisture
- Attach here
- Allowed temperature range (values are explicitly indicated)
- Symbol for storage class
- Center of gravity
- Top
- Lifting by forklift is not allowed
- Drive side

For the design of the symbols, see section relating to Marking and Signing.

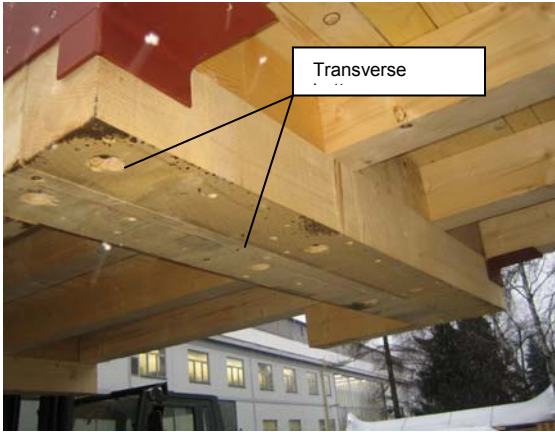


Fig. 6:

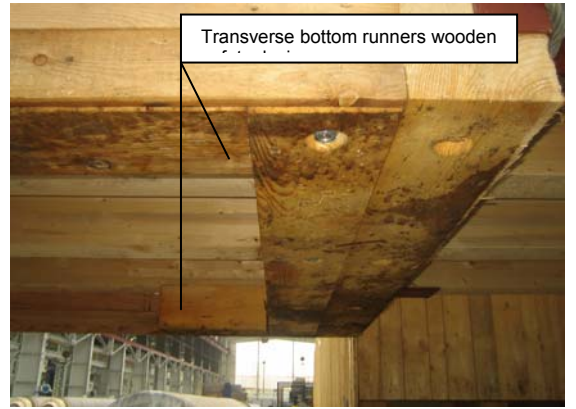


Fig. 7:

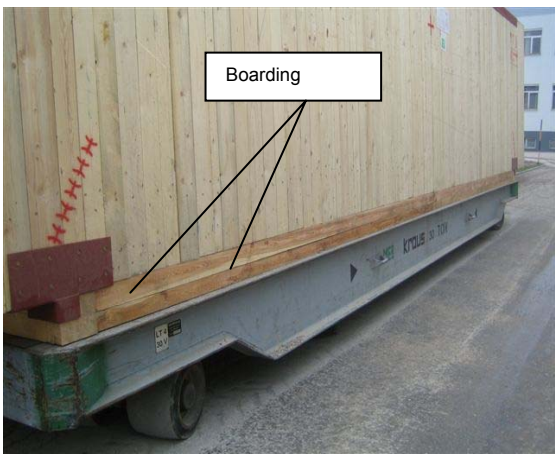


Fig. 8:

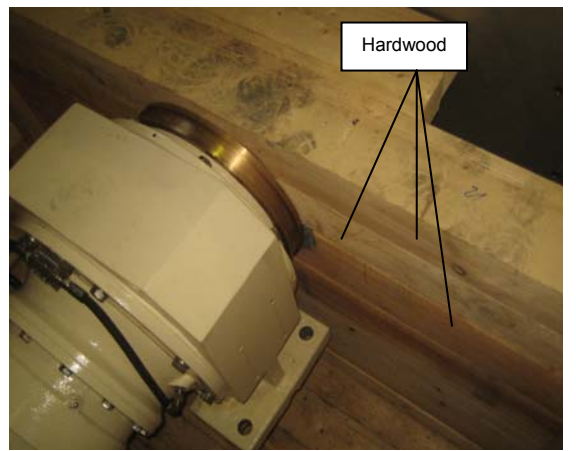
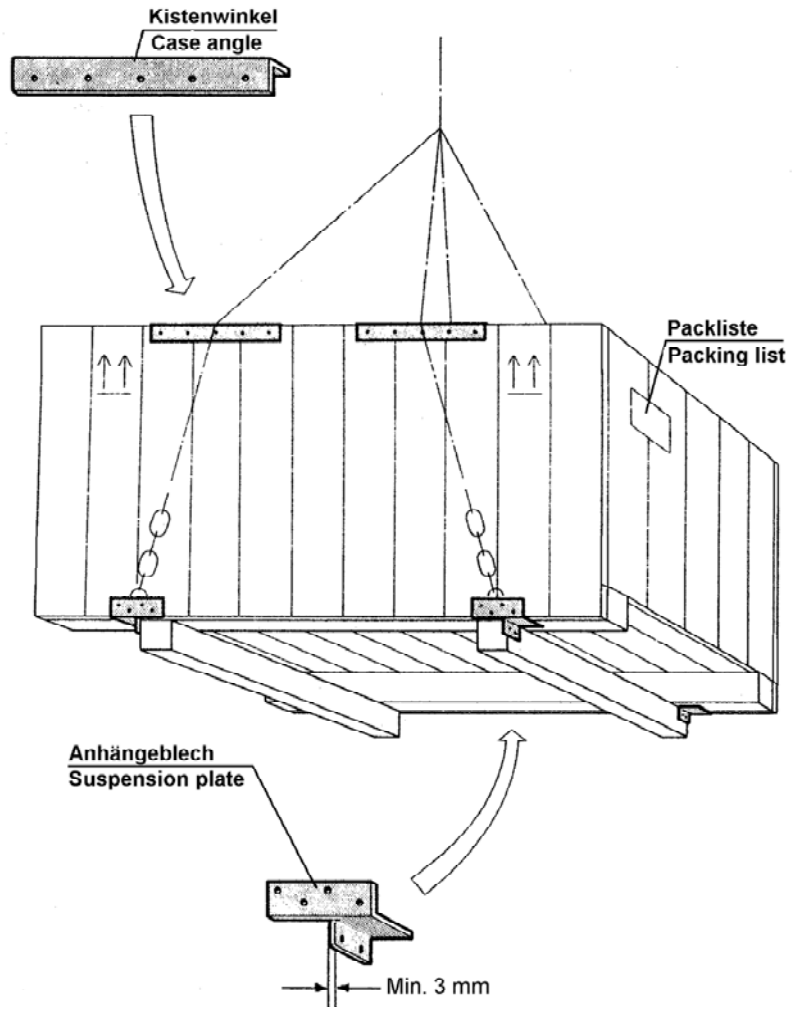


Fig. 9:

Heavy-lift hardware (suspension plates and case angles)

See VN 1577-1

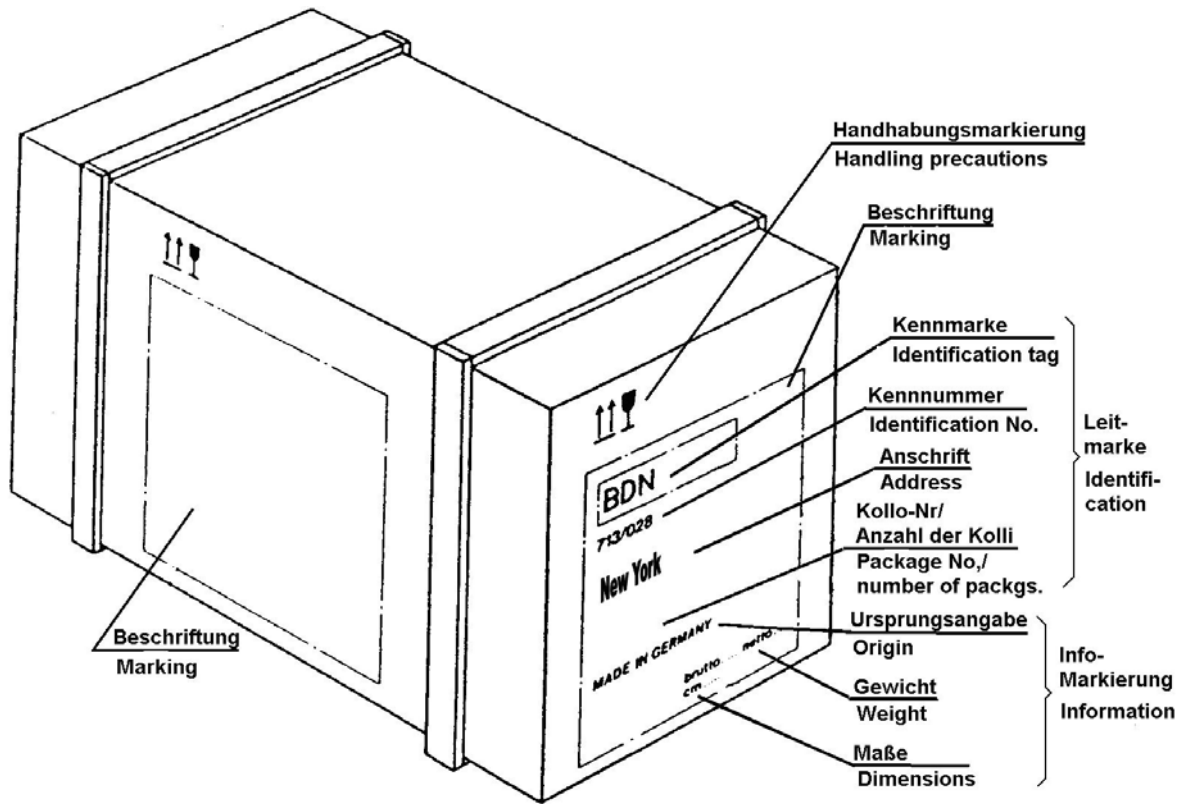
Fig. 10: Fitting of heavy-lift hardware



6 Marking and signing instructions

See also VN 1577-1

Fig. 11: Example of lettering and handling marking






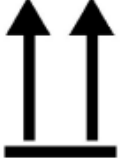












Examples of the labeling of cases for rolls



The “center of gravity” symbol must be put on packages weighing more than 500 kg on at least two bordering sides.

Fig. 12: Symbol for handling marking

Designation	Symbol Design to DIN 30600 / ISO7000 Example of template manu- facture	Designation	Symbol Design to DIN 30600 / ISO7000 Example of template manu- facture
Keep dry		Sling here	
Keep away from heat		Fragile, Handle with care	
Use no hooks		This way up	
Centre of gravity		No hand truck here	
Clamp here		Do not destroy barrier	
Electrostatic sensitive device		Temperature limitations	
Do not use fork lift truck here		Stacking limitation	
Protect from heat and radioactive sources		Tear off here	

The symbol corresponding to the required storage instructions must be applied to the package in accordance with the Packing List.

The symbols are made known for the specific order.